

**Health Care Reform:  
Where Has California Been,  
Where is California Going?**

Presented to:  
National Oral Health Conference  
April 23, 2013

# Topics I Will Cover

## **Where We've Been (and Where We Are Currently):**

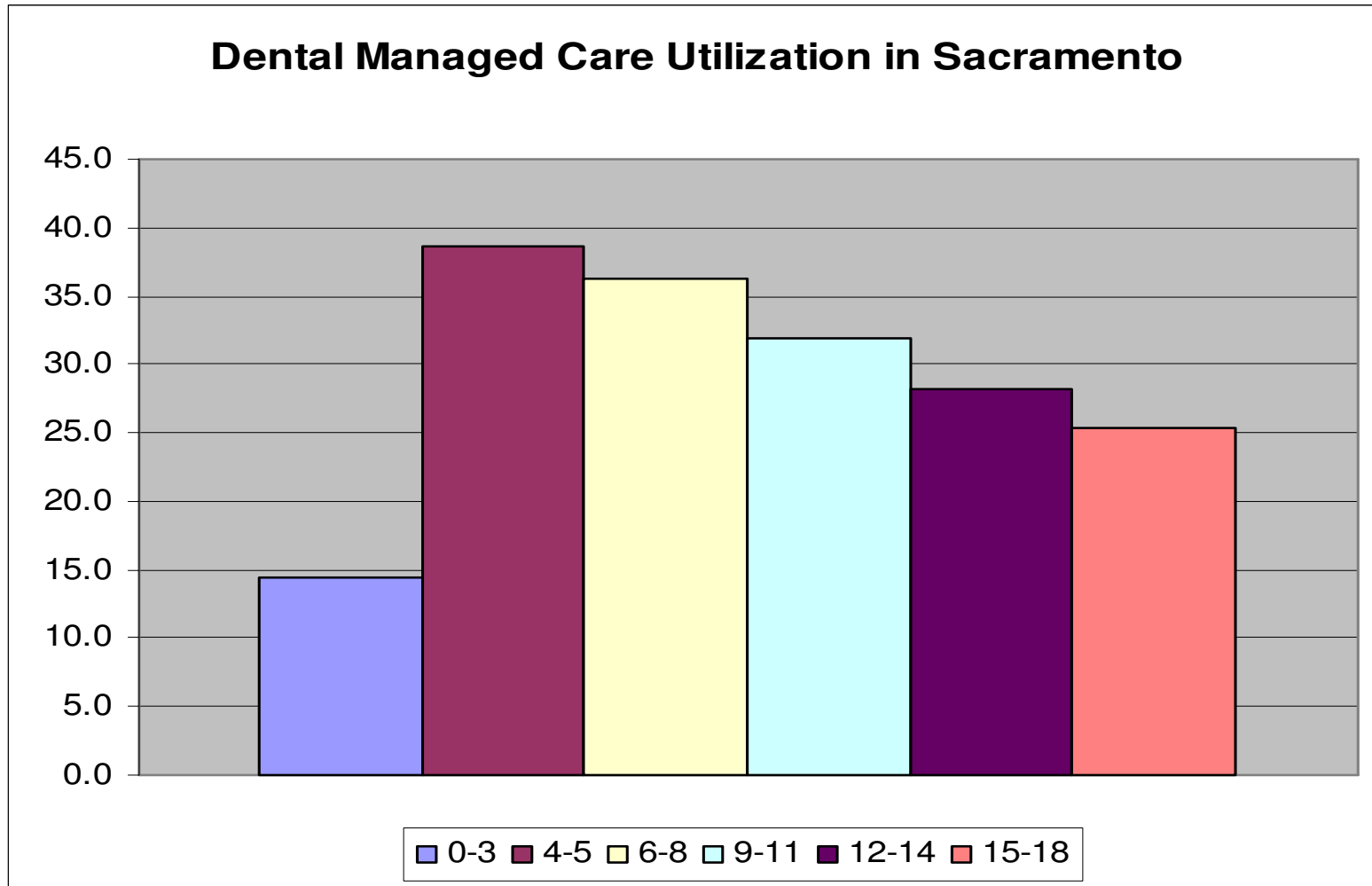
CA Budget:

- Dental Managed Care
- Healthy Families Transition (SCHIP to Medicaid)

## **Where We're Going:**

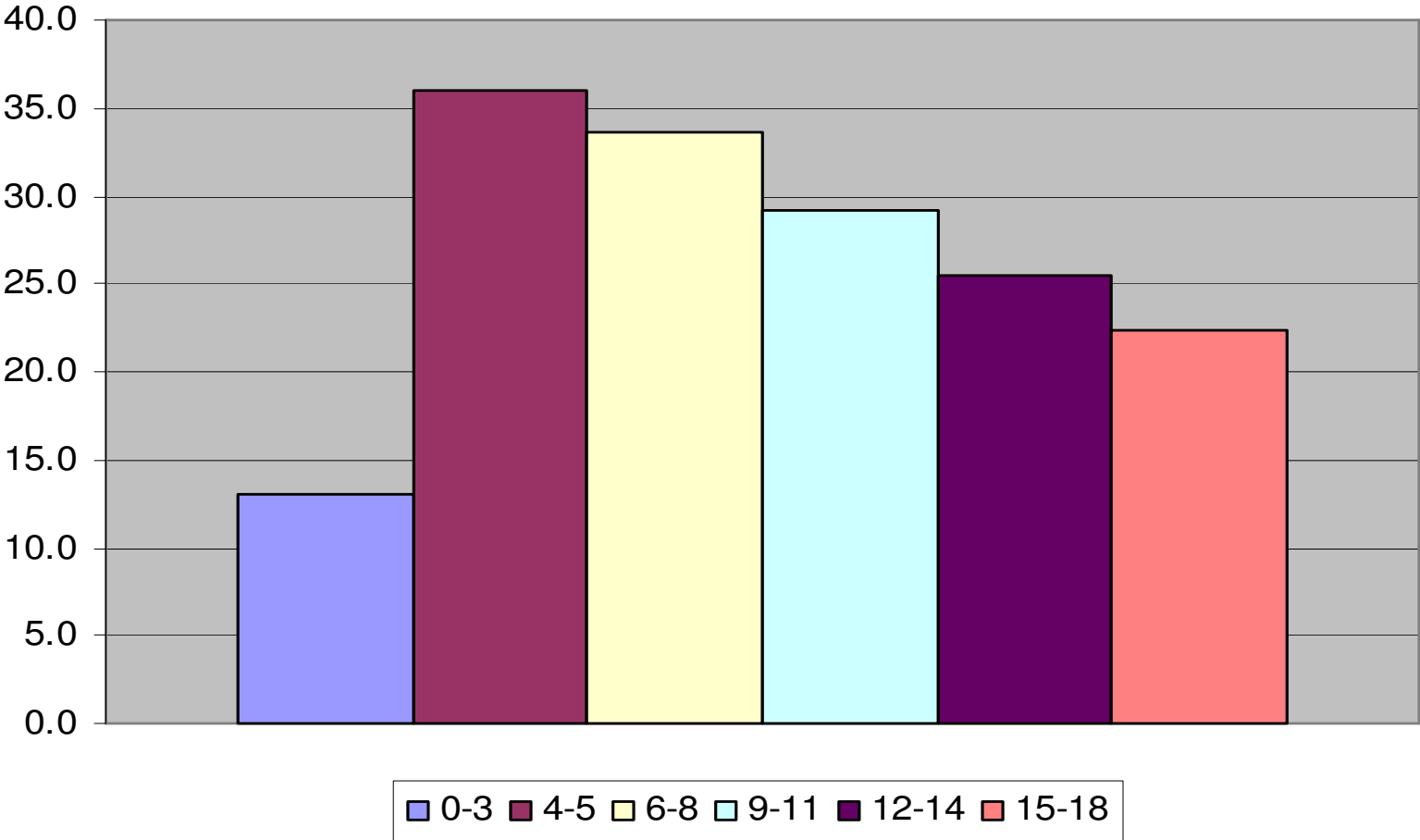
ACA Challenges and Opportunities

# 2012 CA Budget Proposed to Expand Dental Managed Care, However...

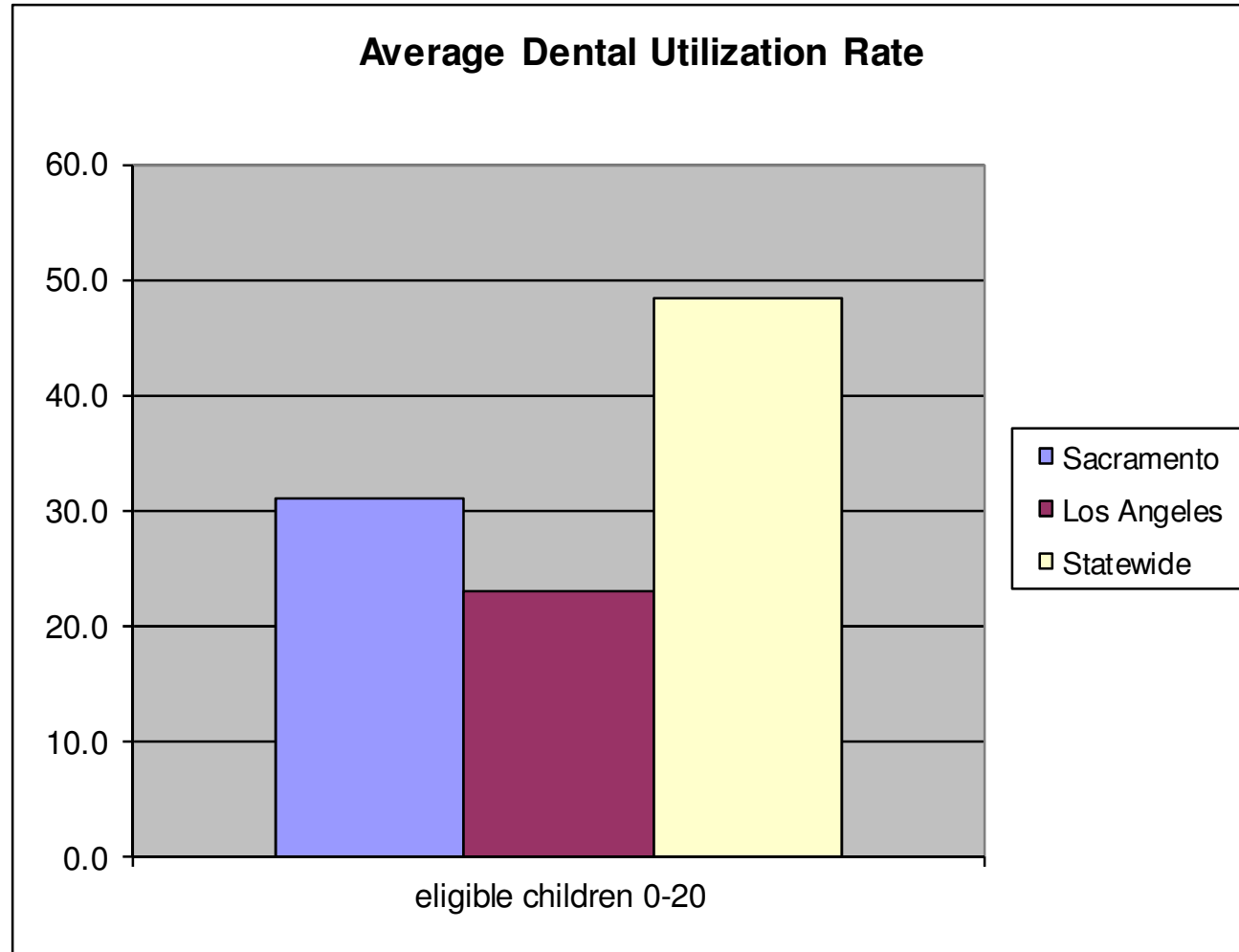


# Los Angeles

## Dental Managed Care Utilization in Los Angeles



# Expansion to Dental Managed Care Halted (For Now)



# Reaction

**“‘Model’ Dental Program Proves Painful for Kids”**

**Center for Health Reporting**

**February 12, 2012**

**“Senator Darrell Steinberg Wants Probe  
of Sacramento County Dental Program”**

**“State Health Chief Vows Changes”**

# Immediate Action Expectations

- Beneficiary outreach
- Phone Call Campaign
- Informational Flyer
- Educational Seminars to Providers
- Outreach to Federally Qualified Health Centers

# New Dental Managed Care Contracts in Effect: Jan/July 2013

- RFP made process competitive (via # of points scored) vs. RFA
- External Quality Review Organization to audit performance measures and conduct annual surveys
- Provider monitoring conducted by plans
- New performance measures with benchmarks broken down by age group, results will be posted online
- Increased withhold amounts for performance measures; bonus payments for outstanding plans



# Healthy Families Transition

- While dental managed care did not expand, the Healthy Families program was eliminated.
- ~900,000 children moving to Medi-Cal fee-for-service dental program beginning January 1, 2013 over four defined phases.  
Expected completion date: October, 2013
- Performance measures for dental managed care will apply to fee-for-service
- Provider network standards – undefined in fee-for-service but monitoring reports include some distance and time factors.

# Covered California - Current, Ongoing Issues

- Ensuring consumer protections and cost transparency of stand-alone dental plans participating in the Exchange
- Educating families about pediatric essential health benefit
  - Training navigators and assisters
  - Enrollment processes facilitate choosing pediatric EHB
  - How will take up of pediatric EHB be tracked?
- Model contract requirements and measures

# Questions?

**EILEEN ESPEJO**

[eespejo@childrennow.org](mailto:eespejo@childrennow.org)

510-763-2444, x114

CHILDREN NOW